



The European Union Emergency Trust Fund for Africa (EUTF)

Horn of Africa



Greater economic and
employment opportunities

Strategic Objective 1 (SO1)
output indicators as of June 2024



S01: Greater economic and employment opportunities

Key EUTF S01 output indicators as of June 2024



152,149
Jobs created
(EUTF 1.1)

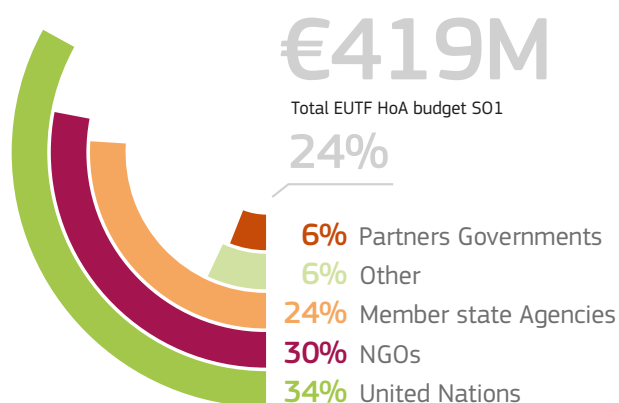
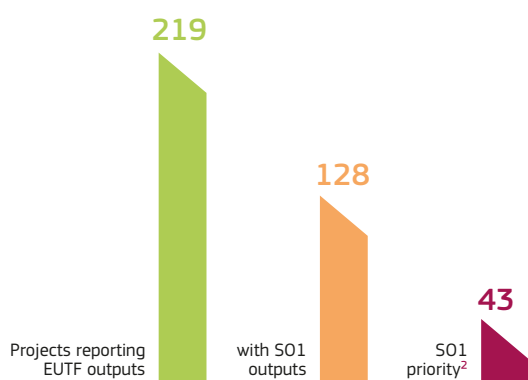


747,881
IGA beneficiaries
(EUTF 1.3)



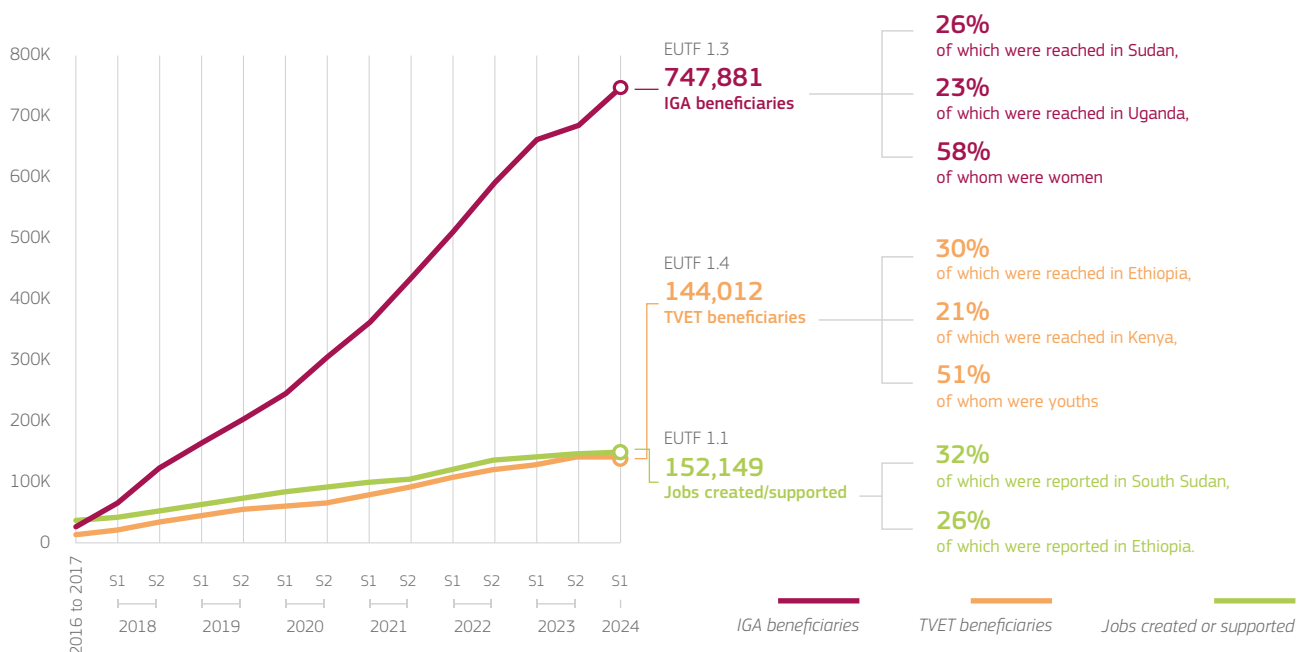
144,012
TVET beneficiaries
(EUTF 1.4)

EUTF S01 portfolio in HoA



Key S01 trends

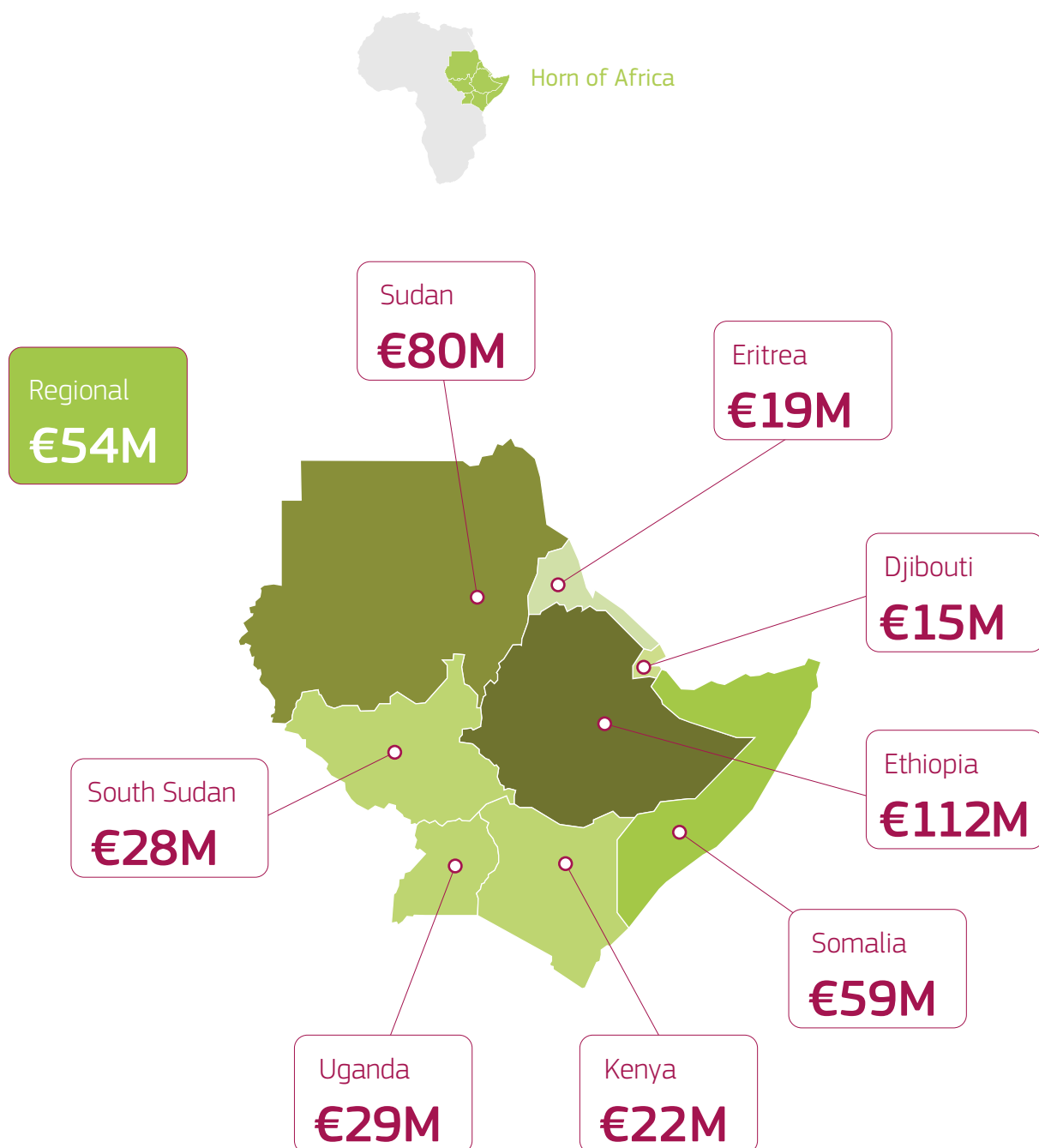
Cumulative EUTF S01 outputs





S01: Greater economic and employment opportunities

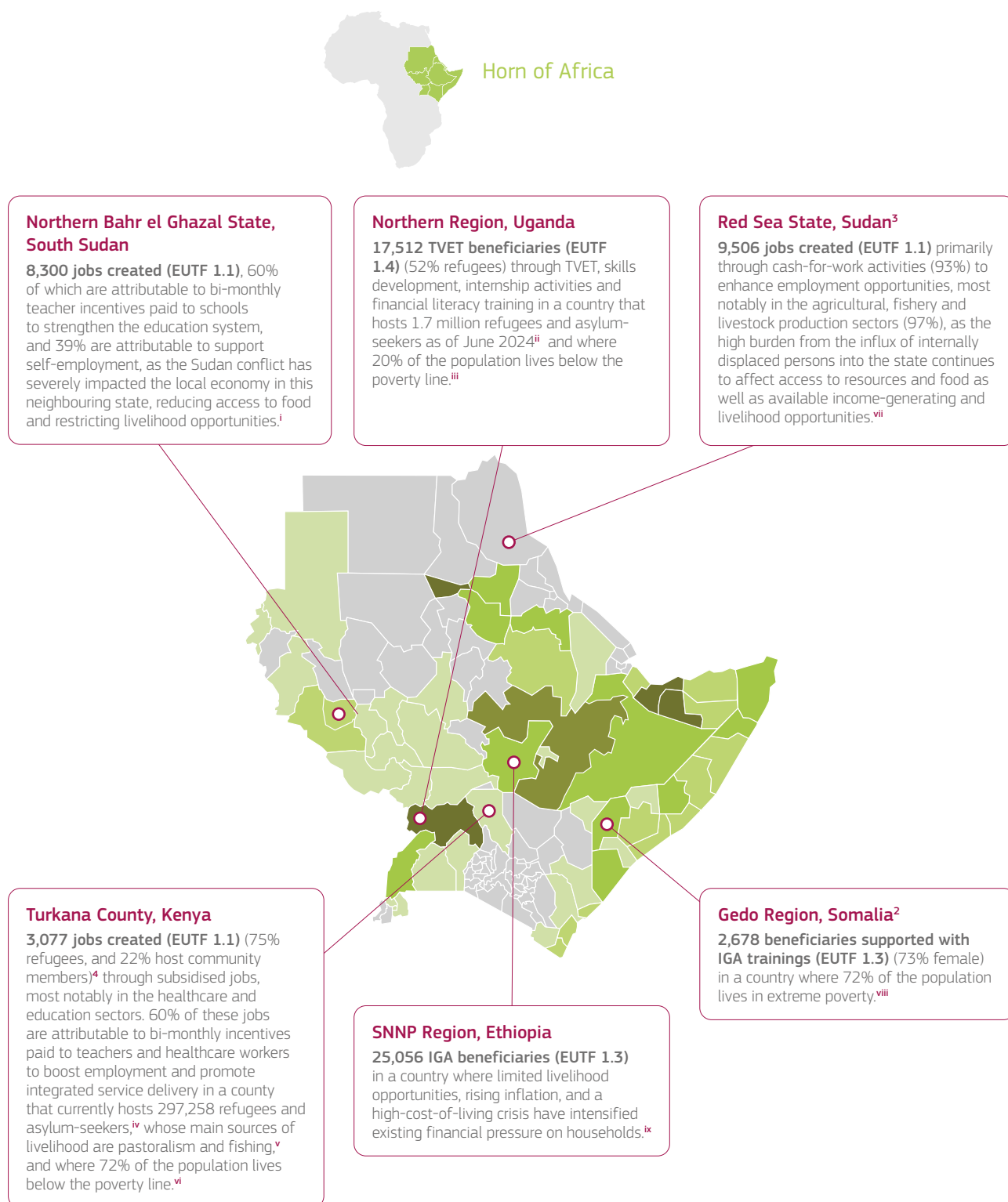
S01 funding by country





S01: Greater economic and employment opportunities

Implementation areas and key S01 outputs as of June 2024

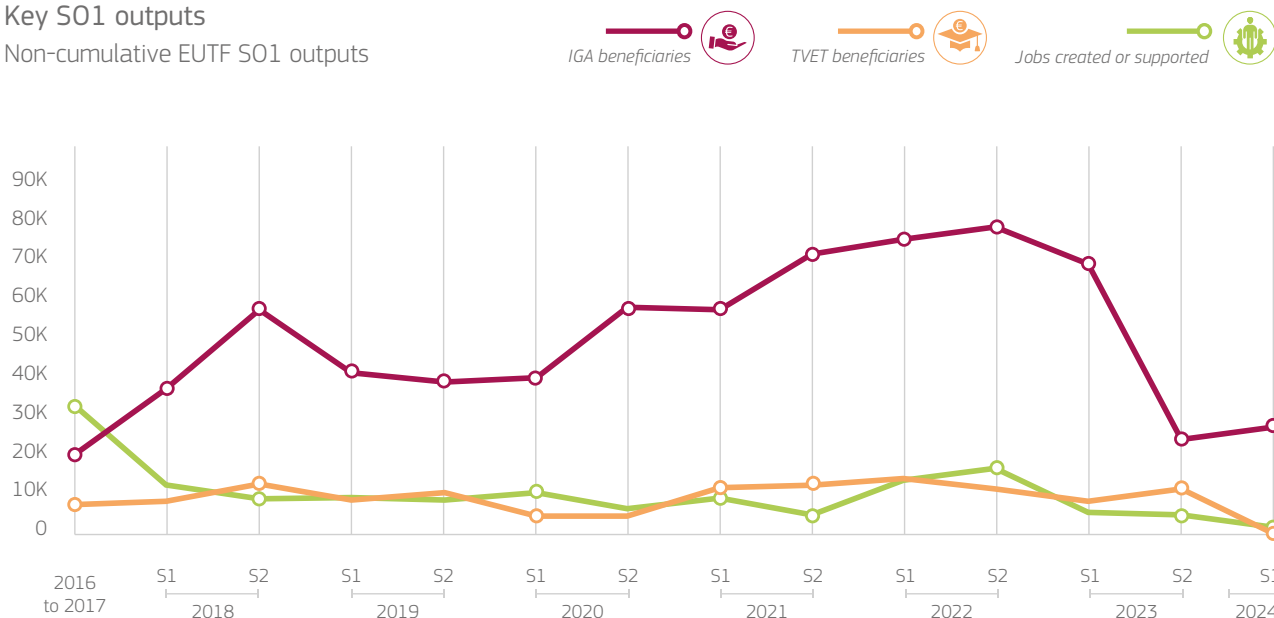




S01: Greater economic and employment opportunities

Key S01 outputs

Non-cumulative EUTF S01 outputs



<p>Large early output in 2016-2017 (32,425) before stabilising at lower consistent levels from S2 2018 (10,249) to S1 2020 (11,776), followed by a notable increase in 2022 (S1: 15,326, S2: 17,198)¹</p> <p>The most significant EUTF-funded projects contributing to job creation include IMPACT MM (South Sudan), SINCE (Ethiopia), SPRS-NU DRC (Uganda), and Improving Nutrition WFP (Sudan), with additional contributions from newer initiatives like Outreach SS UNICEF (South Sudan) and Kenya-EU partnership NCTC through teacher incentives and cash-for-work programmes.</p> <p>Decreased semesterly outputs in S1 2023 (6,578)² and S2 2023 (6,010)³</p> <p>Key contributing projects such as Outreach SS UNICEF (South Sudan), RISE ACF (Uganda), HealthPro Goal (Sudan) and SSRD FAO (South Sudan) significantly slowed down their activities before ending in 2023.</p> <p>Significant drop in S1 2024 (2,471)</p> <p>Despite low outputs in S1 2024, the CRRF ET Job Creation MC (Ethiopia), CRRF KE Self-Reliance (Kenya), and EnJOY (Ethiopia) projects contributed to the semesterly outputs on job creation and income diversification.</p>	<p>Steady growth from 2016-2017 (22,412) to S2 2018 (61,498) followed by a drop in 2019 (86,143 annually) and a renewed increase from S2 2020 (62,105) to S2 2022 (84,028), the highest biannual output to date</p> <p>Key IGA activities were reported by the RDPP programme (multi-country), Improving Nutrition WFP (Sudan), and SPRS-NU DRC (Uganda) in 2018-2019, followed by significant outputs reported in 2022 by Improving Nutrition WFP, Acacia - Arabic Gum Value Chain (both Sudan), and other projects under Decentralised DRR (Ethiopia), RISE, SUPREME (both Uganda), and the SSRD (South Sudan) programmes.</p> <p>Large drop from S1 2023 (73,908) to S2 2023 (26,366)⁴</p> <p>2023 saw the end of key contributing projects such as the RISE (Uganda), SSRD WV and Women Empowerment projects (both South Sudan) implementing IGA activities.</p> <p>Slight increase in S1 2024 (29,767)</p> <p>Despite the end of key contributing projects in 2023, IMPROVE EU GIZ (Sudan), SUPREME Livelihoods WV (Uganda) and the Youth & Women WE-RISE! AICS (Sudan) projects contributed considerable semesterly outputs on TVET and support to IGAs in S1 2024.</p>	<p>Increase through S2 2018 (14,301), before a drop in S1 2019 (9,948) and a steady increase from S1 2021 (13,393) to S1 2022 (16,286)</p> <p>TVET and entrepreneurship outputs peaked in 2018 thanks to SINCE (Ethiopia), SPRS-NU Enabel, and RISE ACF (both Uganda), followed by a decline in 2019 and subsequent rebound from S1 2021 with contributions from the RISE ACF, South Sudan Women Empowerment CORDAID and Cross-Border projects (regional).</p> <p>Drop from S2 2022 (12,868)⁵ to S1 2023 (9,653) followed by a renewed increase in S2 2023 (12,855)</p> <p>Despite the end of key contributing projects in 2023 such as RISE ACF, RISE GIZ (both Uganda), the South Sudan Women Empowerment Cordaid, DCA and Dorcas projects and the SSRD projects (all South Sudan), a significant semester output on TVET and skills development was reported in S2 2023, which is attributable to the EnJOY (Ethiopia), ILED FIG AECF (Somalia), and SPRS-NU Enabel (Uganda) projects.</p> <p>Large drop from S2 2023 (12,855) to S1 2024 (876)</p> <p>Several projects, including Job Creation ITC (South Sudan), RED Save the Children, and SPRS NU Enabel (both Uganda), slowed entrepreneurship, mentorship and skills training activities as they near completion. However, contributions to the S1 2024 output were reported by EnJOY (Ethiopia), Solutions Pérennes WFP (Djibouti), and CRRF DIRECT Maison Shalom (multi-country) projects.</p>



S01: Greater economic and employment opportunities

Abbreviations and acronyms

ACF	Action Against Hunger
AECF	Africa Enterprise Challenge Fund
AICS	Italian Agency for Development Cooperation
CRRF	Comprehensive Refugee Response Framework
DCA	DanChurch Aid
DIRECT	Displacement Responses through Regional Cooperation and Technical exchange
DRC	Danish Refugee Council
EUTF	European Union Emergency Trust Fund for Africa
FAO	Food and Agriculture Organisation of the United Nations
FIG	Finance for Inclusive Growth in Somalia
GIZ	Deutsche Gesellschaft für Internationale Zusammenarbeit
HealthPro	Humanitarian Development Peace Nexus
HoA	Horn of Africa
ILED	Inclusive Local and Economic Development
IGA	Income-generating activities
IOM	International Office for Migration
IMPACT	Impact South Sudan
ITC	International Trade Centre
M	Million
NGO	Non-governmental organisation
Outreach SS	Outreach – Support to students in hard to reach areas in South Sudan
RDPP	Regional Development and Protection Programme
RISE	Response to Increased Demand on Government Service and Creation of Economic Opportunities in Uganda
SINCE	Stemming Irregular Migration in Northern & Central
SO	Strategic Objective
SPRS-NU	Support Programme for Refugee Settlements in the Northern Uganda
SRRD	South Sudan Rural Development
SUPREME	Security, Protection, and Economic Empowerment
TVET	Technical and vocational education and training
UNHCR	United Nations High Commissioner for Refugees
UNICEF	United Nations Children's Fund
Youth (programme)	Conflict Prevention, Peace, and Economic Opportunities for the Youth
WE-RISE	Womens Empowerment for Resilience, Inclusion, Sustainability and Environment
WFP	World Food Programme
WV	World Vision
GIZ	German Corporation for International Cooperation

Footnotes

1. Throughout this section, the term 'TVET' also includes other forms of skills development.
2. Projects with S01 priority have a larger budget allocation to S01 than to any other Strategic Objective, per the MLS portfolio analysis.
3. The colours on the map represent the number of S01 priority projects in each region. However, the key outputs selected highlight notable results achieved by EUTF projects, and do not always correlate with the number of projects present in a given area.
4. Geographical data disaggregation has not been possible for many Somalia projects, and as a result, regional output data provided for Somalia is significantly underrepresented.
5. Although there is no S01 priority project in Sudan's Red Sea State, several EUTF projects relocated or intensified their activities in the state as it is still relatively insulated from the conflict and insecurity occurring across most other parts of the country since April 2023.
6. The remaining 4% of beneficiaries are unspecified.
7. The S2 2022 output here differs from the 17,026 beneficiaries reported in the previous infographic, which is attributable to data retroactively added for COVID-19 Emergency Response (Somalia).
8. The S1 2023 output here differs from the 6,322 beneficiaries reported in the previous infographic, which is attributable to data retroactively added for COVID-19 Emergency Response (Somalia).
9. The S2 2023 output here differs from the 5,891 beneficiaries reported in the previous infographic, which is attributable to data retroactively reported by Alianza Shire (Ethiopia), ILED ISED NIS (Somalia), and Covid-19 Emergency Response (Somalia).
10. The S2 2023 output reported here differs from the 26,354 beneficiaries reported in the previous infographic, which is attributable to data retroactively reported by Alianza Shire (Ethiopia).
11. The S2 2022 output reported here differs from the 12,753 beneficiaries reported in the previous infographic, which is attributable to data corrections made by the IP for ILED SAGAL CW.

Sources

- i. REACH Initiatives, 'Humanitarian situation overview Aweil East and Northern Bahr el Ghazal', 24 October 2024 at <https://reliefweb.int/report/south-sudan/humanitarian-situation-overview-aweil-east-and-northern-bahr-el-ghazal-october-2024-aweil-east-northern-bahr-el-ghazal-south-sudan>
- ii. UNHCR, 'Uganda Factsheet – May – June 2024', 30 July 2024 at <https://reliefweb.int/report/uganda/unhcr-uganda-factsheet-may-june-2024>
- iii. WFP, 'Uganda', 2024 at <https://www.wfp.org/countries/uganda>
- iv. UNHCR, 'Refugees and asylum-seekers in Kenya', 30 November 2024 at <https://data.unhcr.org/en/country/ken>
- v. Republic of Kenya, 'County Government of Turkana - Third county integrated development plan', 2023 – 2027 at <https://maarif.co.ke/sites/default/files/2024-06/TURKANA%20CIDP%202023-2027.pdf>
- vi. JRS, 'Breaking down barriers: Increasing girls' access to and completion of education in Kakuma refugee camp', 4 April 2024 at <https://jrs.net/wp-content/uploads/2024/03/FINAL-4-April-2024-Kakuma-Gender-Analysis-Report-to-print.pdf>
- vii. FEWSNET, 'Famine (IPC Phase 5) is ongoing in part of Al Fasher, North Dafur', June 2024 – January 2025 at <https://fewsonline.net/east-africa/sudan/food-security-outlook/june-2024>
- viii. World Bank, 'Somalia MPO' October 2024 at <https://thedocs.worldbank.org/en/doc/bae48ff2f6c5a869546775b3f010735-0500062021/related/mpo-som.pdf>
- ix. FEWS NET, 'Hunger and acute malnutrition outpace the scale-up of food assistance – Ethiopia', 2 February 2024; UNHCR, 'East and Horn of Africa, and the Great Lakes Region – operational update April – June 2024', 29 August 2024 at <https://fewsonline.net/east-africa/ethiopia/food-security-outlook/february-2024>; <https://reliefweb.int/report/sudan/unhcr-operational-update-east-and-horn-of-africa-and-great-lakes-region-april-june-2024>; PWC, 'Ethiopian Birr devaluation; Impact on inflation and the International Development Sector programs', 16 October 2024 at <https://www.pwc.com/ke/en/blog/ethiopian-birr-devaluation.html>



European Commission

The EU Emergency Trust Fund for Africa

Address: Rue de la Loi 41, B-1049 Brussels

Phone: +32 (0) 2 299 11 11

E-mail: intpa-eutf-africa@ec.europa.eu

Website: <https://trust-fund-for-africa.europa.eu>



**Funded by
the European Union**

Funding and non-responsibility disclaimer:

This material was produced with the financial support of the European Union through the European Emergency Trust Fund for Africa. Its contents are the sole responsibility of Altai Consulting and do not necessarily reflect the views of the European Union.

Copyright notice:

© European Union, 2025

Graphic design: Pomilio Blumm srl

Cover photo: © Investisseurs & Partenaires (I&P)

Licensed to the European Union under conditions