



The European Union Emergency Trust Fund for Africa (EUTF)

Sahel and Lake Chad



**Improved migration management
in countries of origin, transit
and destination**

**Strategic Objective 3 (SO3)
output indicators as of June 2023**



S03: Improved migration management in countries of origin, transit and destination

Key EUTF S03 output indicators as of June 2023



212,889

Migrants in transit protected and/or assisted (EUTF 3.2)



21,310,547

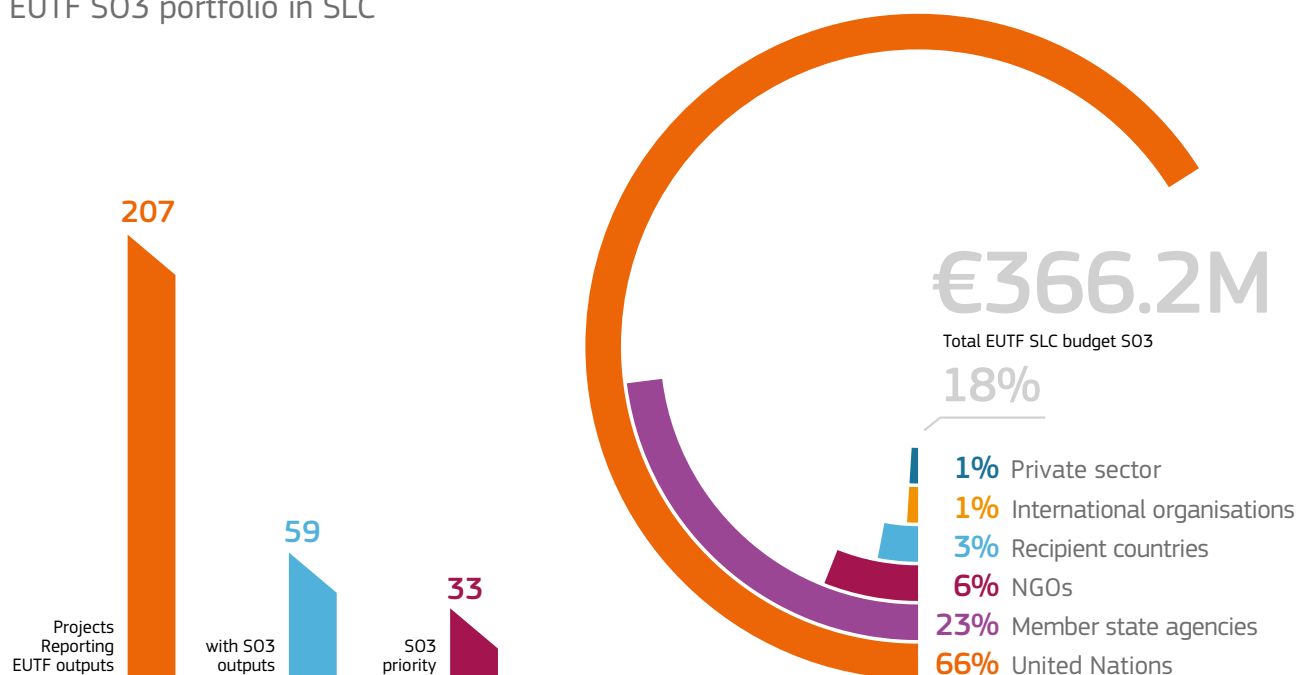
Migrants reached by information campaigns on migration (EUTF 3.3)



73,215

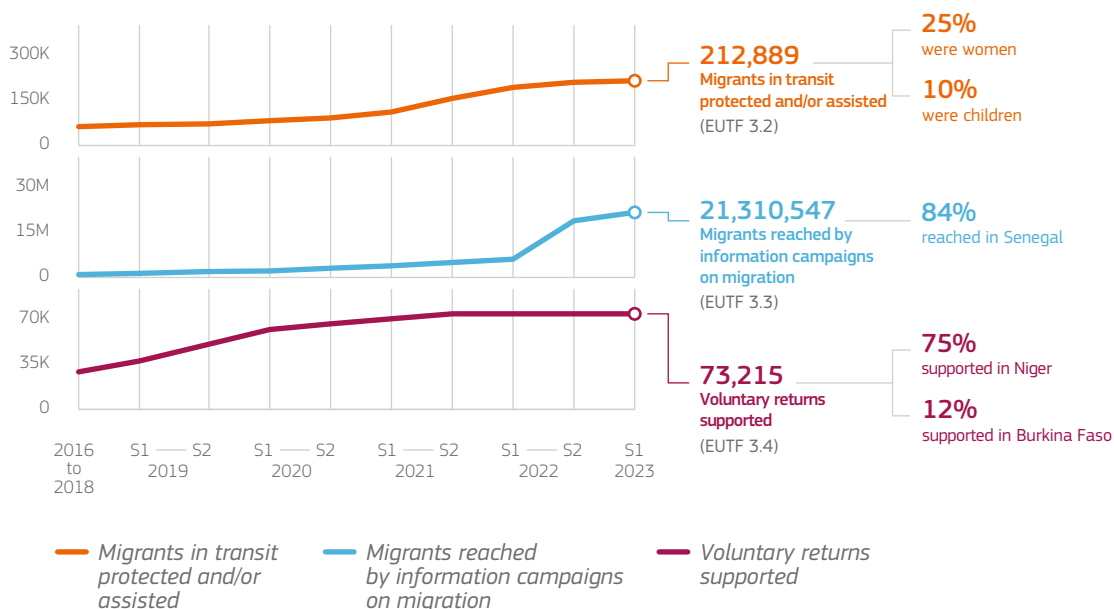
Voluntary returns supported (EUTF 3.4)

EUTF S03 portfolio in SLC



Key S03 trends

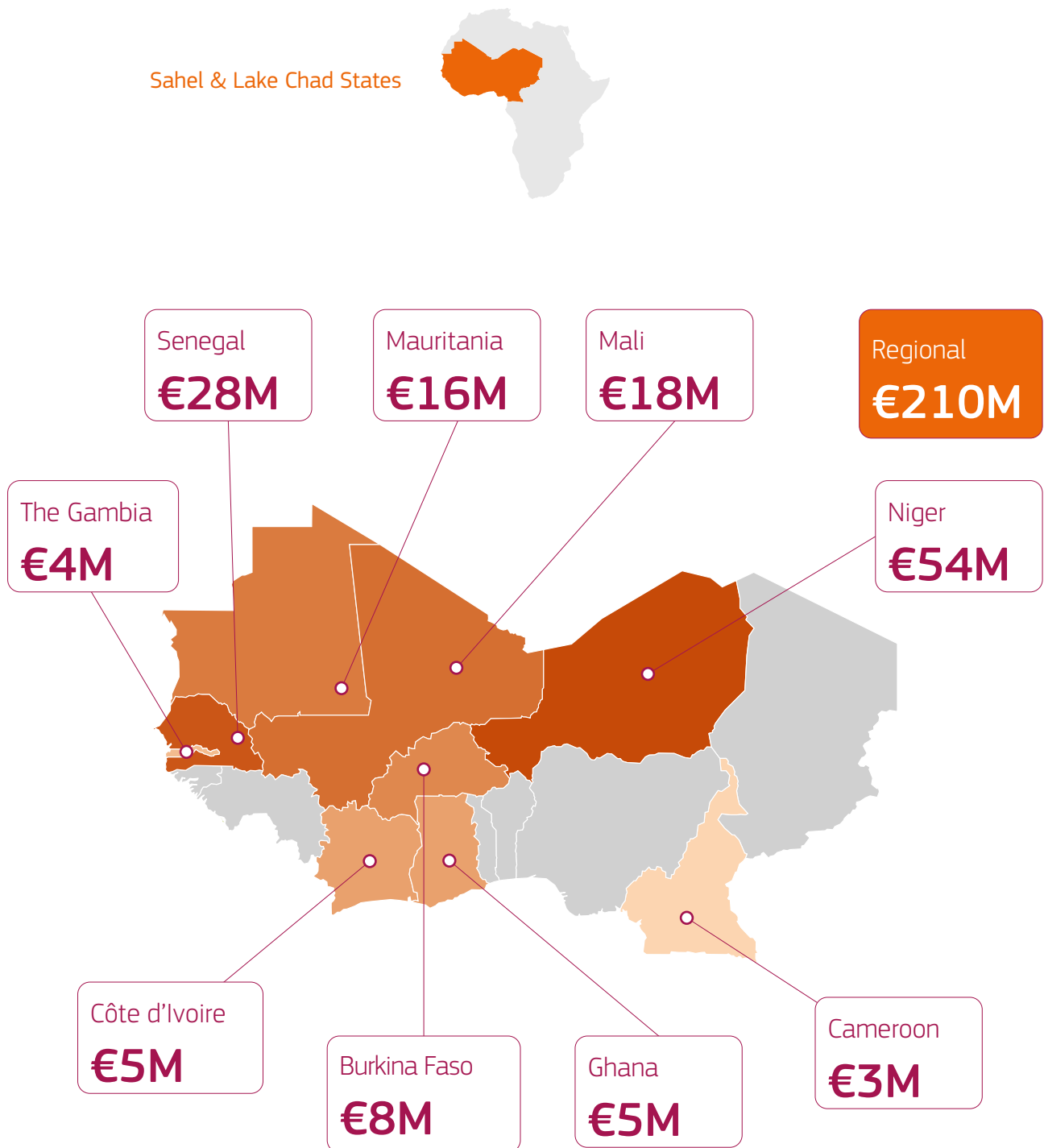
Cumulative EUTF S03 outputs





S03: Improved migration management in countries of origin, transit and destination

S03 funding by country





S03: Improved migration management in countries of origin, transit and destination

Implementation areas and key S03 outputs as of June 2023

Sahel & Lake Chad States

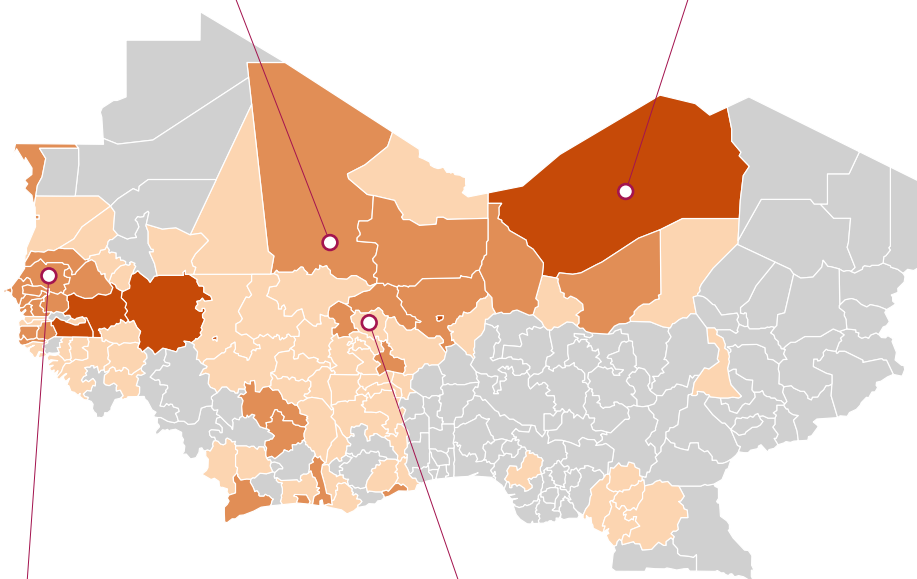


Mali

46,362 people on the move have been protected and/or assisted (EUTF 3.2), in a country hosting 410,039 displaced people (IDPs and refugees).ⁱ 60% of these people (28,105) were reached in Tombouctou, hosting 49,953 IDPs and 8,479 refugees.ⁱⁱ

Niger

55,207 voluntary returns have been supported (EUTF 3.4). IOM JI Niger SURENI accounted for 89% of these actions. In 2022, Niger was the 6th country of origin of migrants benefitting from voluntary return related activities implemented by IOM.ⁱⁱⁱ



Senegal

17,798,726 migrants were reached by information campaigns on migration (EUTF 3.3). In the first half of 2023, IOM data highlighted 24 departures from the Senegalese coast, carrying a total of 2,325 people on the Atlantic Route.^v

Burkina Faso

31,504 people on the move have been protected and/or assisted (EUTF 3.2), in a country that is severely affected by conflict and counts 2,062,534 IDPs among its population.^{iv} 10,955 of the people assisted were in Centre-Nord, hosting 493,954 IDPs.

Number of S03 priority projects per region¹

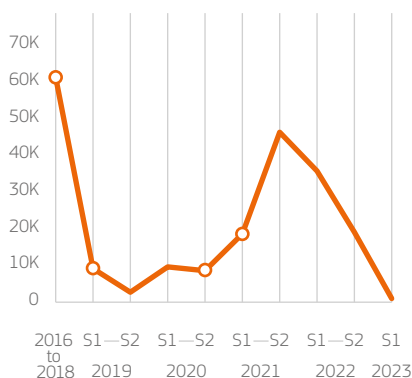
0 1 2-3 >3



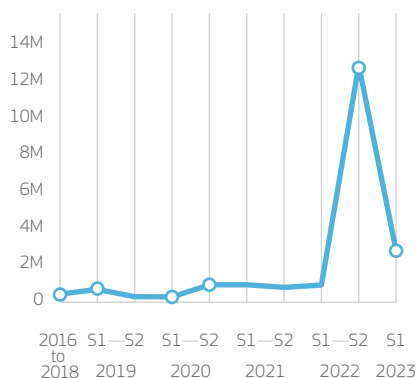
S03: Improved migration management in countries of origin, transit and destination

Key S03 outputs

Non-cumulative EUTF S03 outputs



Migrants in transit protected and/or assisted (EUTF 3.2)



Migrants reached by information campaigns on migration (EUTF 3.3)



Voluntary returns supported (EUTF 3.4)



Significant early outputs, with 61,089 migrants protected in 2016-2018

IOM JI in Niger was the main contributor to these early outputs, accounting for 87% of results. Migration ML (10%) and Protection CMR 1 (3%) also supported people on the move in 2018 in Mali and Niger, respectively.

Low outputs from S1 2019 to S1 2021, with 48,500 people on the move supported or protected

The most significant contributors were IOM JI Niger SURENI (Niger - 35%) and Protection West Africa (regional - 35%). Among the migrants protected or supported, 21% were women and 77% were men. 11% were minors.

Downward trend with 57,145 people on the move protected or supported in 2022 and 2023, after an increase at 46,155 in S2 2021

Protection West Africa contributed to 92% of these results. Overall, countries with the most beneficiaries were Mali (33%), Burkina Faso (26%), and Niger (24%). People received packages (42%), other NFIs (41%) and psycho-social assistance (12%).



Significant early outputs, with 443,515 migrants reached by information campaigns before 2019

The main contributors to these early outputs were IOM JI Niger SURENI, *Développer l'emploi au Sénégal* and PAIERA (Niger). Migrants were sensitised mostly through mass media and awareness raising campaigns, but 12,680 of beneficiaries also benefitted from face-to-face campaigns.

Steady outputs from 2019 to S1 2022, with an average of 719,929 people reached per semester

Développer l'emploi au Sénégal took the lead on this period accounting for 40% of results. IOM JI Regional (19%), YEP (10%), Protection West Africa (8%), PASPED (7%) and Migration ML (6%) also implemented sensitisation campaign between 2019 and S1 2022. Senegal (49%), Ghana (17%) and the Gambia (12%) benefitted most from these activities.

Sharp increase since S2 2022, with 15,827,594 migrants reached between S2 2022 and S1 2023

Results in S2 2022 and S1 2023 represent 74% of the overall results of this indicator since the launch of the EUTF. 96% of the beneficiaries were reached in Senegal through two main programmes: *Développer l'emploi au Sénégal* (71%) and PASPED (28%).



Significant early outputs, with 29,194 voluntary returns supported before 2019

These returns were mostly implemented in Niger (85%) through IOM JI Niger SURENI and to a lesser extent in Mali (6%), Burkina Faso (6%) and Mauritania (3%) through Refugees' resilience.

Steady outputs, with 43,408 people supported in 2019, 2020 and 2021

IOM JI Niger SURENI remained the main contributor with 67% of the returns supported, followed by Refugees' resilience (18%) in Burkina Faso, Mauritania, and Niger, as well as Migration ML (4%), which is active in Mali.

New increase in 2023 with 420 voluntary returns supported, after a significant drop in 2022

Stabilisation Agadez in Niger was the last programme still supporting voluntary returns in 2022 and S1 2023. The programme supported migrants rejected and stranded at the Algerian border and without access to hygiene and sanitation facilities.



S03: Improved migration management in countries of origin, transit and destination

Abbreviations and acronyms

AU-EU-UN Taskforce	Joint taskforce of the African Union, the European Union and the United Nations
DES	Développer l'emploi au Sénégal: Renforcement de la compétitivité des entreprises et de l'employabilité dans les zones de départ
DIZA	Programme de développement inclusif dans les zones d'accueil
ETM Niamey	Enhancing Protection, Live-Saving Assistance And Solutions, Including Resettlement For Persons Of Concern With International Protection Needs In Libya And West Africa (Niger And Burkina Faso)
IOM	International Organization for Migration
JI	Joint Initiative
Other NFI	Other non-food items
PACERSEN	Projet d'Appui à la réduction de la migration à travers la Création d'Emplois Ruraux au Sénégal, par la mise en place de fermes agricoles villageoises et individuelles
Protection CMR	Protection and sustainable solutions for migrants and refugees along the Central Mediterranean route
S03	Improved migration management in countries of origin, transit and destination
YEP	Youth Empowerment Project

Footnotes

1. The colours on the map represent the number of S03 priority projects in each region. However, the key outputs selected highlight notable results achieved by EUTF projects, and do not always correlate with the number of projects present in a given area.

Sources

- i. IOM, 'Situation in Central Sahel, Liptako-Gourma and Coastal Countries, DTM Monthly Dashboard #38', June 2023. Retrieved [here](#).
- ii. OCHA, 'Mali : Profil humanitaire de la région de Tombouctou (mars 2023)', 30 June 2023. Retrieved [here](#).
- iii. IOM, 'Return and reintegration key highlights 2022', 2023. Retrieved [here](#).
- iv. UNHCR, 'Burkina Faso: Personnes avec et pour lesquelles le HCR travaille - Fiche d'information sur le pays', 31 July 2023. Retrieved [here](#).
- v. IOM, 'État des lieux des départs : Sénégal Mouvement vers les Îles Canaries', Retrieved [here](#), [here](#) and [here](#). (Data collated for January-February, March-April, May-June 2023).



European Commission

The EU Emergency Trust Fund for Africa

Address: Rue de la Loi 41, B-1049 Brussels

Phone: +32 (0) 2 299 11 11

E-mail: intpa-eutf-africa@ec.europa.eu

Website: <https://trust-fund-for-africa.europa.eu/>



**Funded by
the European Union**

Funding and non-responsibility disclaimer:

This material was produced with the financial support of the European Union through the European Emergency Trust Fund for Africa. Its contents are the sole responsibility of Altai Consulting and do not necessarily reflect the views of the European Union.

Copyright notice:

© European Union, 2023

Graphic design: Pomilio Blumm srl

Cover photo: © GIZ/Raed Saleh

Licensed to the European Union under conditions